



LOVE146

END CHILD TRAFFICKING AND EXPLOITATION

CHILDREN AT RISK OF CHILD TRAFFICKING NATIONAL AND LOCAL RESPONSE

MULTI-DISCIPLINARY

IDENTIFICATION –

COOPERATION –

REFERRAL

Philip Ishola
Executive Director
Love146 UK



context

- Dual processes (a) Child safeguarding and protection (administrative)
- Identification for the purpose of?
- National and local guidance
- Harmonised frontline working
- Risk and Protection – influencing factors
 - Nationality
 - Inconstant NRM decision making



trafficking: Identification of children for the purpose of ?

UK Children Social Care

- Protection of the child
- Safeguarding Response
- Safe place (accommodation)
- Health needs (immediate and recovery)

Delivery of duties defined under child law and under Convention on Action against Trafficking in Human Beings and the UN Convention on the Rights of the Child

UK (child) National Referral Mechanism

- Determination as a victim of Trafficking as defined by the Council of Europe Convention on Action against Trafficking in Human Beings
- Administrative Purposes
- Immigration appeal process
Positive determination can influence outcomes
- Minimum standard compliance with convention



trafficking: potential outcomes of identification

UK Children Services

- Ending of exploitation and abuse
- Reduced risk of re exploitation.
- Safe return
- Health needs (immediate and recovery)
- Child centred and focussed
- Delivery of duties defined in child law and under Convention on Action against Trafficking in Human Beings and the UN Convention on the Rights of the Child

UK Child National Referral Mechanism

- For non-UK children positive determination may mean 5 years Leave to Remain



What does safety look like at national and local levels ?

Influencing factors

- Breaking the control of traffickers
 - An holistic approach reflected in statutory guidance for a child in need and at risk
 - Working to a multidisciplinary framework to inform how a child is seen and treated
 - Honest and open reflecting the process and possible outcomes
-
- A place of safety and support
 - health
 - recovery
 - education, stability and certainty



working example - cooperation and identification

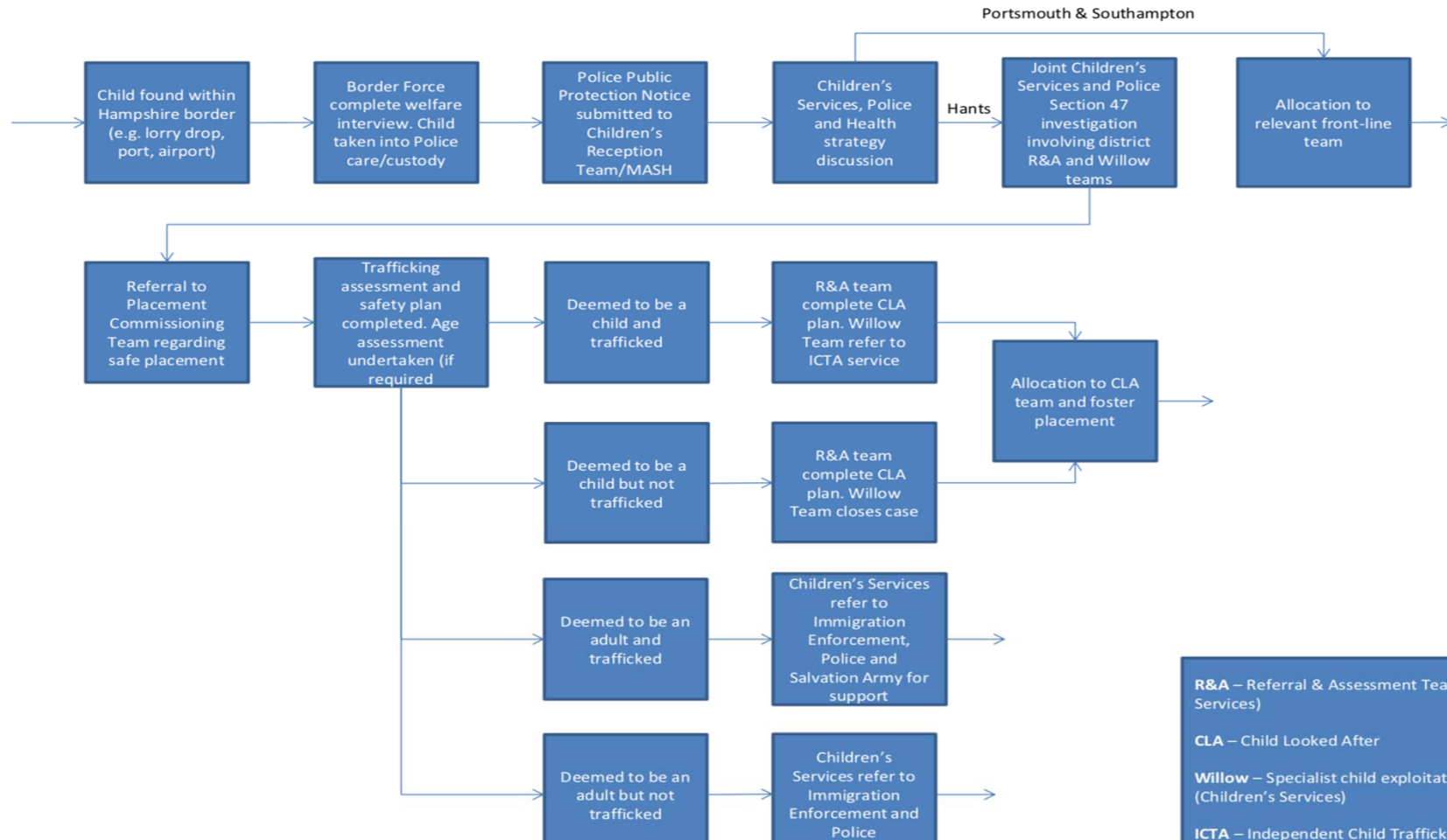
The following pictorial flowcharts are taken from the **Missing, Exploited and Trafficked**

Children Protocol

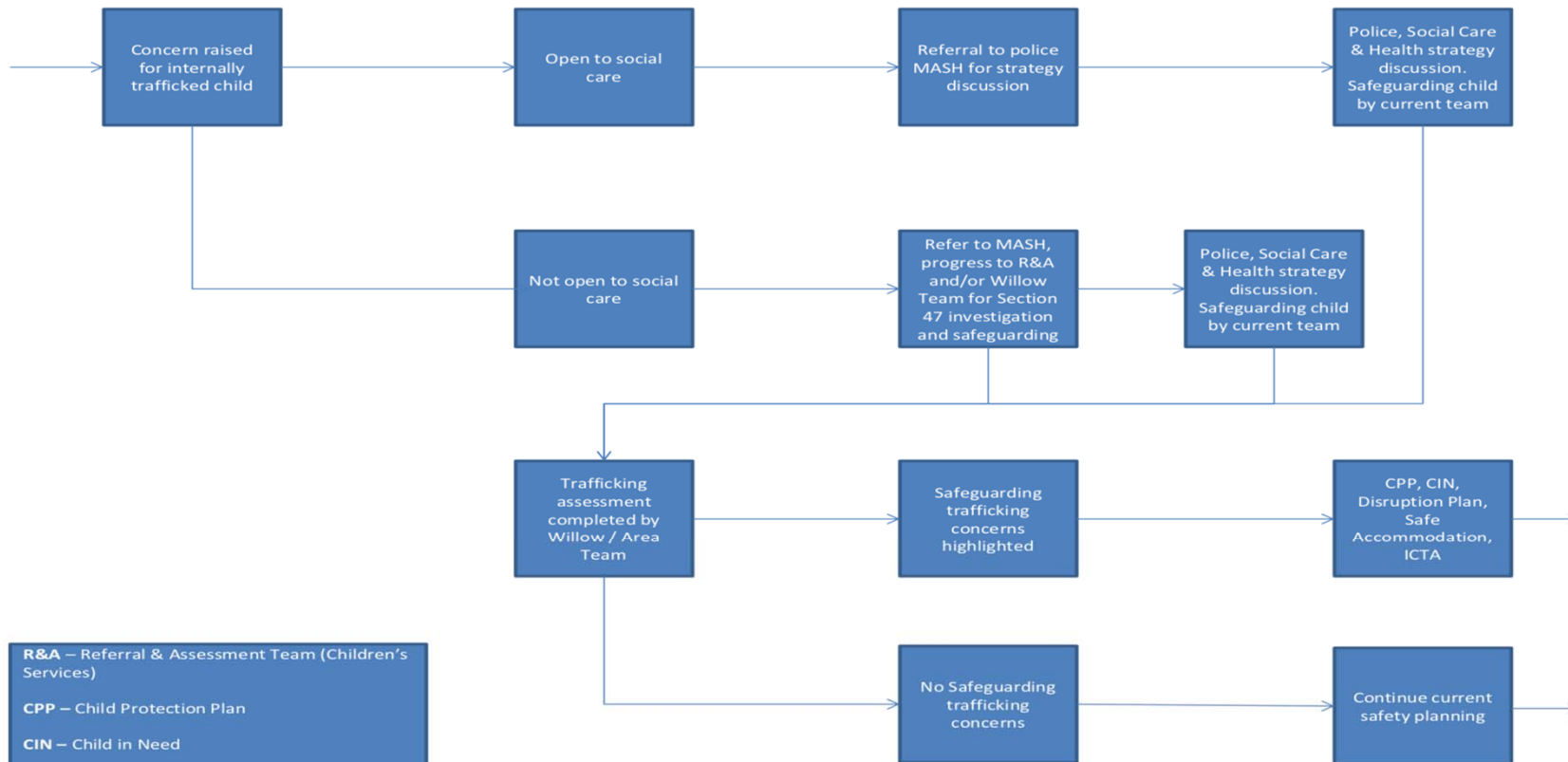
This protocol covers the 4 Local Safeguarding Childrens Board LSCB areas of Portsmouth, Isle of Wight, Hampshire and Southampton. The 4 LSCBs have a collective multi-agency responsibility to identify children and young people who are at risk of going missing, being exploited and/or trafficked and to safeguard them from further risk of harm.

| | |
|---|--|
| Introduction | |
| Purpose | |
| Information Sharing Responsibilities | |
| Definitions | |
| • Missing Children | |
| • Exploited Children | |
| • Child Sexual Exploitation | |
| • Criminal Exploitation | |
| • Trafficked Children | |
| • Modern Slavery | |
| Recognition | |
| Missing | |
| Safe & Well & Return Interviews | |
| Child Sexual Exploitation | |
| Immediate Protection | |
| Trafficked Children | |
| What to do if you're concerned about a child | |
| Reporting missing | |
| Consent | |
| Multi agency involvement | |
| Child or Young Person's Wishes | |
| Intervention | |
| Looked After Children | |
| Young People over 18 | |
| Young People over 18 entitled to After Care Services | |
| Identifying, Disrupting & Prosecuting Perpetrators | |
| Quality Assurance | |

Identification within Hampshire Border



Internally Trafficked Children



R&A – Referral & Assessment Team (Children's Services)

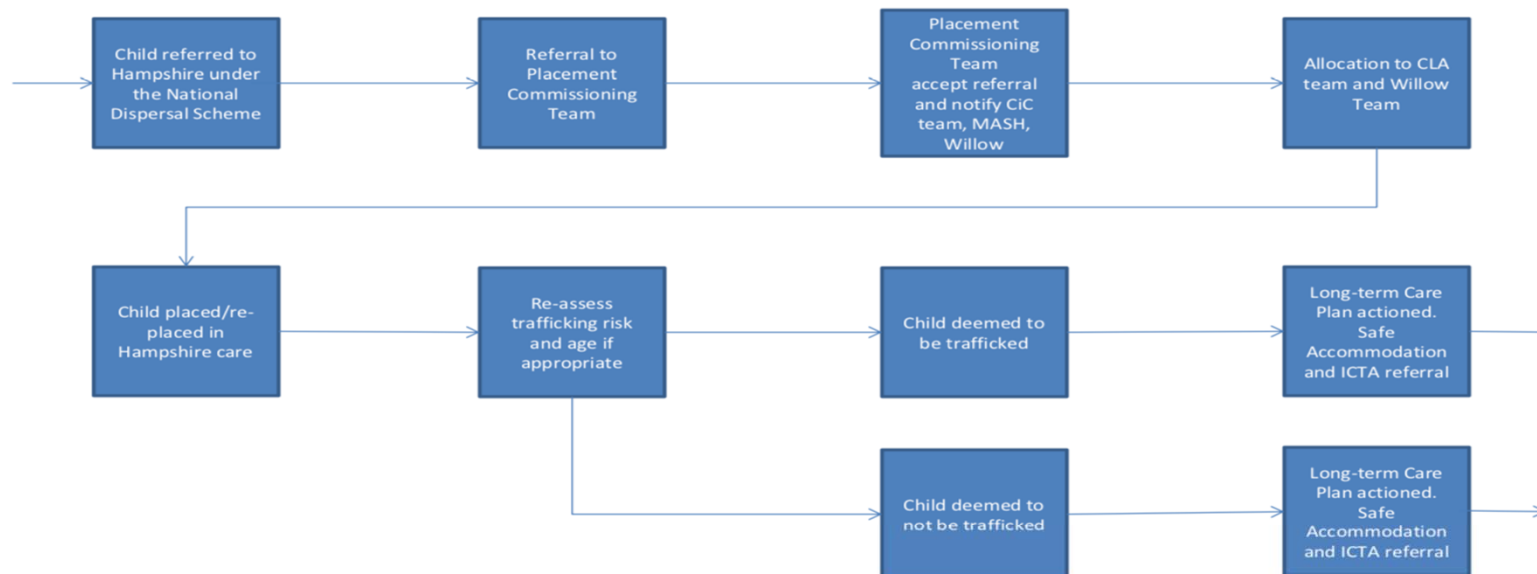
CPP – Child Protection Plan

CIN – Child in Need

Willow – Specialist child exploitation team (Children's Services)

ICTA – Independent Child Trafficking Advocates Service (Barnardo's)

National Dispersal Scheme for Unaccompanied Asylum Seeking Children (UASC)



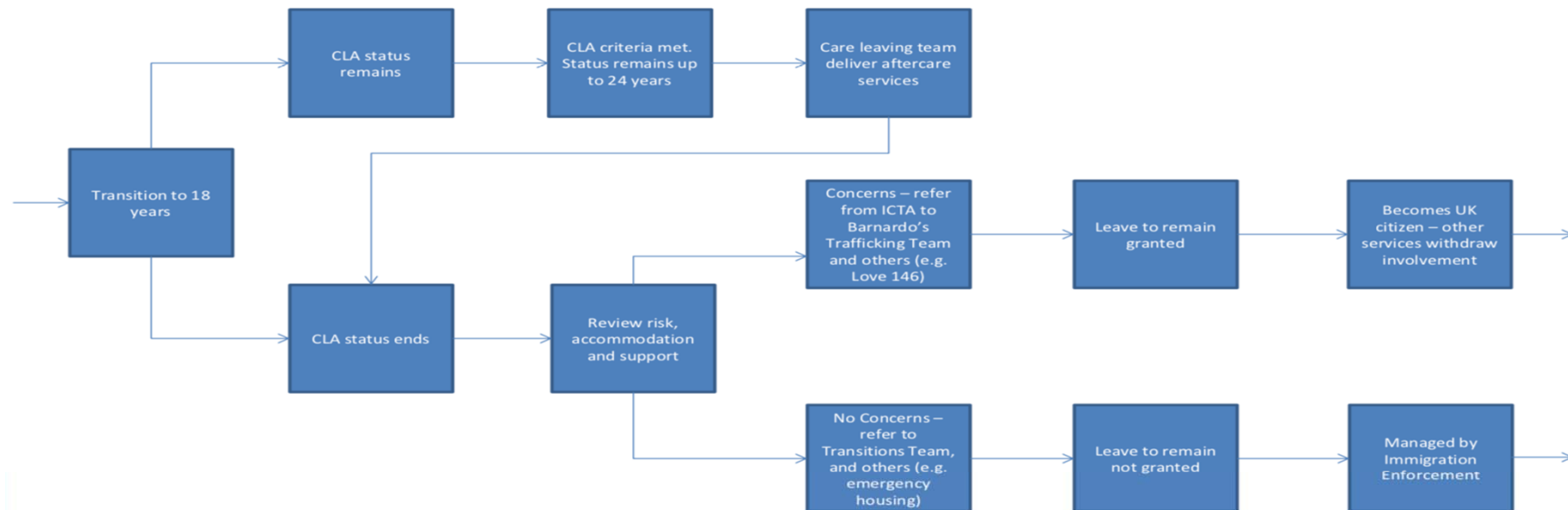
CiC – Children in Care Team (Children's Services)

CLA – Child Looked After

Willow – Specialist child exploitation team within Children's Services

ICTA – Independent Child Trafficking Advocates Service (Barnardo's)

Transition to Adulthood



CLA – Child Looked After

ICTA – Independent Child Trafficking Advocates Service (Barnardo's)



referral and partnership work

SPECIALIST SUPPORTED ACCOMMODATION

- Child centred
- Immediate safety using the safety plan
- Open communication
- Regular review of needs
- Developing trusting positive relationships
- Working in partnership
- Health and wellbeing
- Increasing self esteem
- Building resilience
- Promoting safety

FULL UNDERSTANDING OF THE TRAFFICKING ISSUES AND SAFEGUARDING

LOVE146
END CHILD TRAFFICKING AND EXPLOITATION

© LOVE146, 2002-present: PO BOX 883, ALTRINCHAM, WA15 5ND, UK
☎ 0845 6802 146 ✉ INFO@LOVE146.ORG.UK 🌐 WWW.LOVE146.ORG
Registered Company #7822545 Registered Charity #1144930

OUTREACH SUPPORT

- Being the constant in that young persons life
- 1-1 support in all aspects of the young persons life
- Being there for the long haul, as long as it takes

SPECIALIST SUPPORTED INDEPENDENT ACCOMMODATION

Transition and safeguarding needs:

- Just because a young person reaches 18 does not mean re trafficking risks have gone away. Trafficker can seek out their investment when support diminishes.
- A young person may become isolated and will be vulnerable to exploitation
- We understand that the life of a young person who has been trafficked can also be impacted by the immigration process and other risks factors.
- Should the young person need extra support or need to be moved to a safe area, Specialist Supported Independent Accommodation can be the resource that can provide the safe place for them.



CONTINUING SAFETY ISSUES

- High risk of going missing, golden hour
- Traffickers often pose as relatives
- Inappropriate placements
- Child not always spoken to away from adult/carer
- Interpreters
- Not seen as children first and foremost
- Not always seen as victims
- Criminalised
- Immigration process
- Leaving care



THANK YOU FOR LISTENING

Any Questions

LOVE146
END CHILD TRAFFICKING AND EXPLOITATION

🌐 WWW.LOVE146.ORG
©LOVE146 2002-PRESENT

✉ INFO@LOVE146.ORG.UK
REGISTERED COMPANY #7822545

✉ PO BOX 51700 SE8 9BX
REGISTERED CHARITY #1144930